

# Steam Coil Datasheet



5902 Old Hwy 80  
 Longview, TX 75606  
 Phone: (903) 212-2645  
 Fax: (903) 295-9130  
 www.specialtycoils.com

<b>Customer:</b>	
<b>Part # / Unit:</b>	
<b>Date:</b>	<b>By:</b>

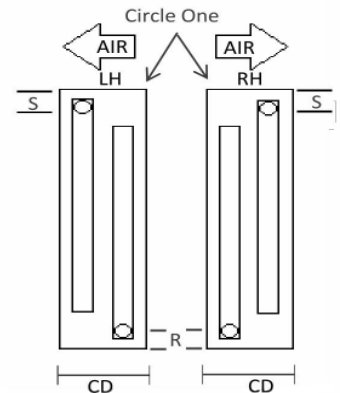
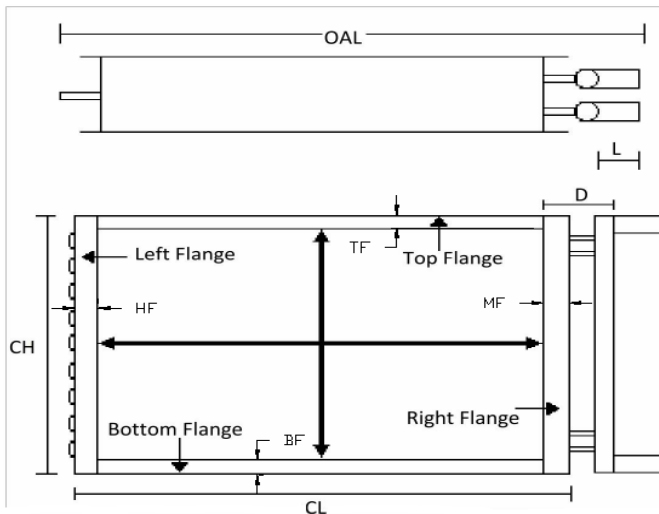
Tubing			Fin Material	Fin Surface	Coil Information
3/8"	1/2"	5/8"	Aluminum .0045	Louvered	RD (Rows Deep)
.014S	.016S	.020S	Aluminum .0055	Sine Wave	TH (Tubes High)
.028S	.025S	.025S	Aluminum .0075	(Note: 1/2" and 5/8" Sine Wave Only)	FH (Fin Height)
		.035S	Aluminum .010		FL (Finned Length)
			Copper .006		FPI (Fins Per Inch)

CASING				
Material				Measurements
Galv.	Alu.	S.S.	Cu.	CH (Casing Height)
20Ga	.050	18Ga	1/16"	CL (Casing Length)
18Ga	.063	20Ga		CD (Casing Depth)
16Ga	.080			OAL (Overall Length)
				HF (Hairpin Flange) In / Out
				MF (Manifold Flange) In / Out
				TF (Top Flange) In / Out
				BF (Bottom Flange) In / Out

Headers and Connections								
	Hdr S1 (D)	Hdr S2 (D)	Hdr R1 (D)	Hdr R2 (D)	Conn S1 (S)	Conn S2 (S)	Conn R1 (R)	Conn R2 (R)
3/8"								
1/2"								
5/8"								
3/4"								
7/8"								
1-1/8"								
1-3/8"								
1-5/8"								
2-1/8"								
2-5/8"								
3-1/8"								
#Legs								
Sweat (L)								
MPT Size								
FPT Size								
Other								

**NOTE: Try and send videos and/or pictures of the coil circuiting also  
 Everything highlighted in yellow must be completed**

## NOTES



PERFORMANCE DATA			
Entering Air (DB)	Entering Steam Temp.	Air CFM	# Circuits
	Entering Steam Pressure	BTUH Required	

